

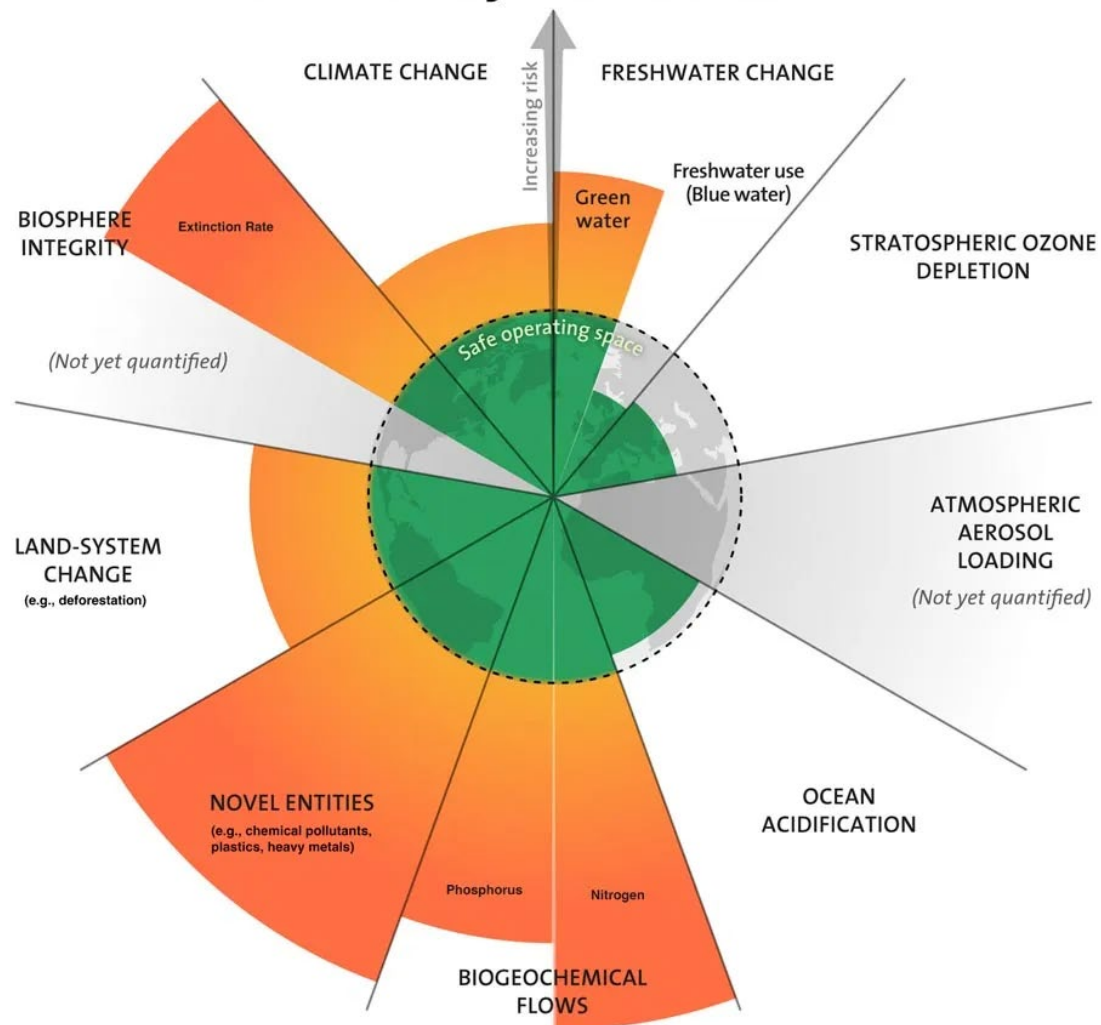


What did nature ever do for us? And what can we do for nature?

Sam Kendall, Education Manager, Eden Project

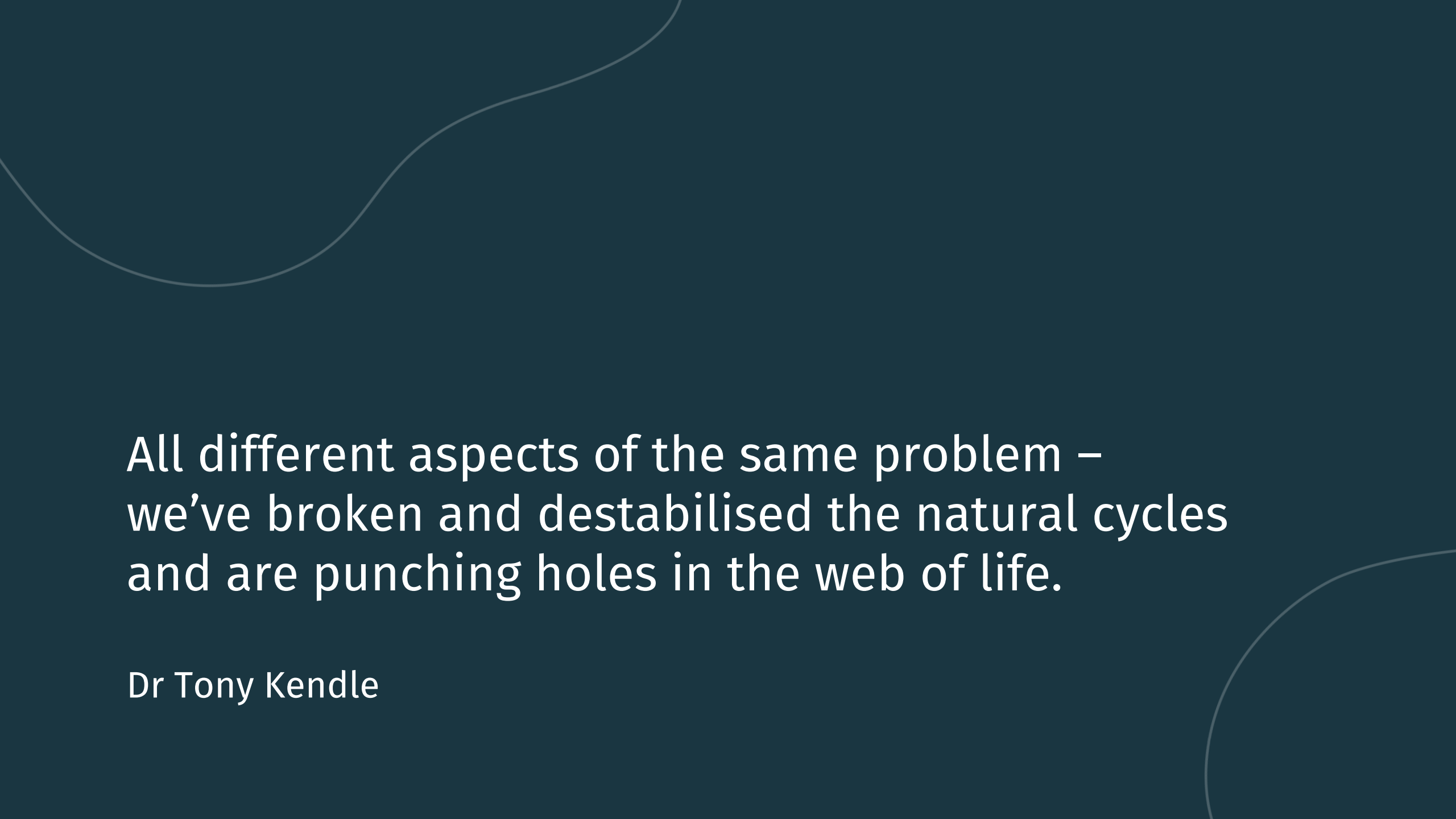


Planetary Boundaries



Planetary boundaries -
Stockholm Resilience Centre

We have a Planetary Emergency



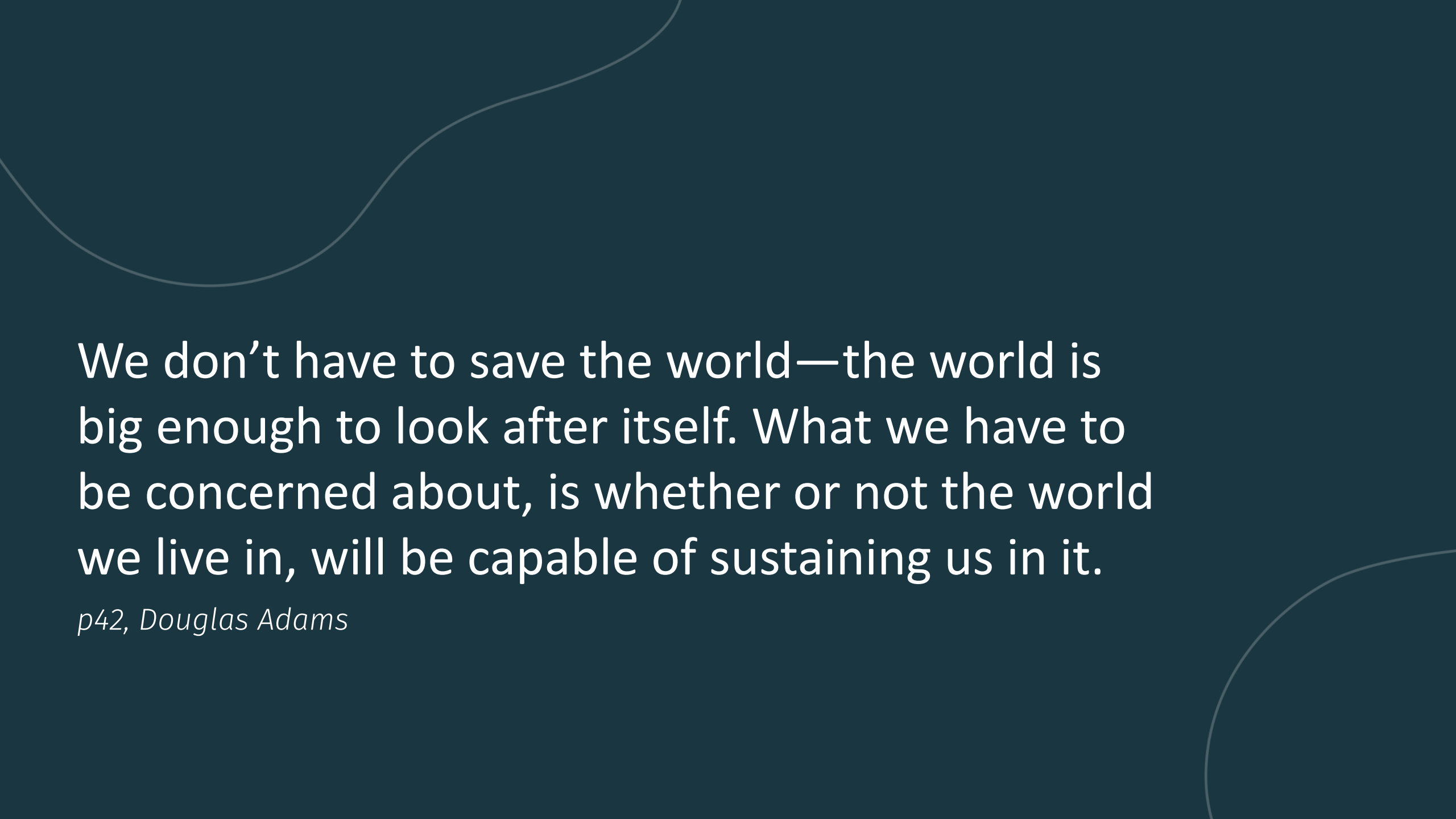
All different aspects of the same problem –
we've broken and destabilised the natural cycles
and are punching holes in the web of life.

Dr Tony Kendle



UN CLIMATE
CHANGE
CONFERENCE
UK 2021

Keep 1.5
Alive



We don't have to save the world—the world is big enough to look after itself. What we have to be concerned about, is whether or not the world we live in, will be capable of sustaining us in it.


p42, Douglas Adams

A photograph of several purple flowers with yellow centers growing in a grassy field. The flowers are in various stages of bloom, with some fully open and others as buds. The background is a soft-focus green field under a clear sky.

#STATEOFNATURE

OF 8,431 UK SPECIES ASSESSED,
ONE IN SEVEN IS AT RISK
OF EXTINCTION.

state of
nature
PARTNERSHIP




Green jobs are those aimed at protecting and promoting the environment, or those which consider their impact on the health of the planet at all times and endeavour to minimise it. This type of job

- Increases efficient consumption of energy and raw materials
- Limits greenhouse gas emissions
- Minimises waste and contamination
- Protects and restores ecosystems
- Contributes to adaptation to climate change

International Labour Organisation



A decorative wavy line in a light grey color, starting from the left edge and curving upwards and then downwards, ending near the top center of the slide.

It is critical young people and adults have the green skills that will allow them to build careers and participate as Britain leads the world into the Green Industrial Revolution and strives for nature's recovery.

Through our education and skills system, we will seek to inspire young people to choose career paths that support the:

- transition to net zero
- restoration of biodiversity
- a sustainable future

DfE Climate and Sustainability Strategy

A decorative curved line in a light grey color, starting from the right edge and curving upwards and then downwards, ending near the bottom right corner of the slide.



Increases *inefficient* consumption of energy and raw materials
Increasing greenhouse gas emissions
Maximising waste and contamination
Damages ~~*Protects and restores*~~ ecosystems
Contributes to ~~*adaptation and*~~ climate change

(not the) International Labour
Organisation



Every job a green job..?



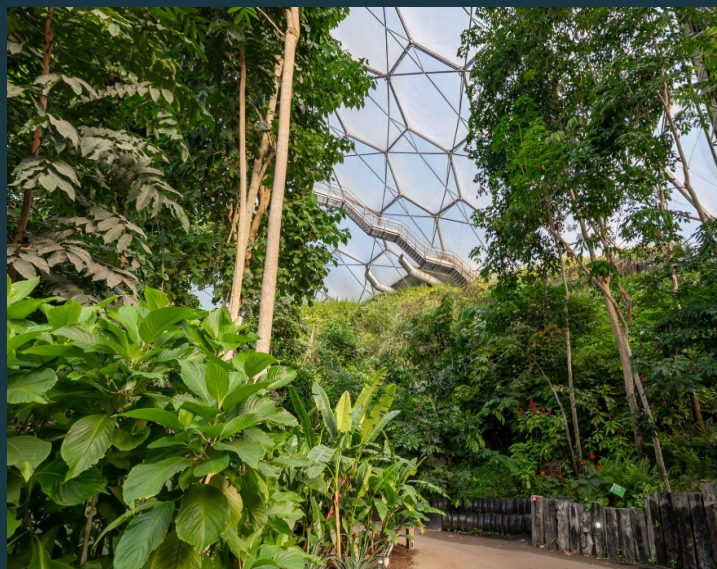
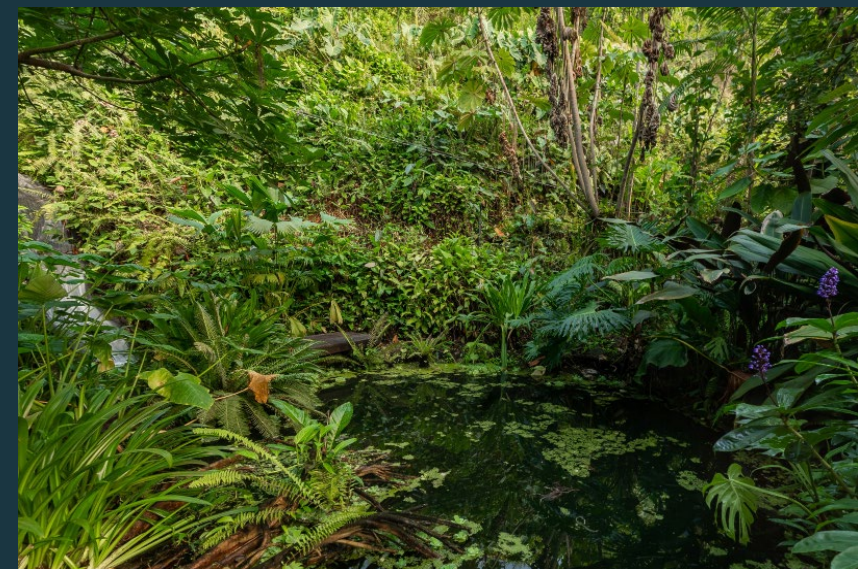
Eden Mission



To create a movement that builds relationships between people and nature to demonstrate the power of working together for the benefit of all living things.

www.edenproject.com

Rainforest Biome

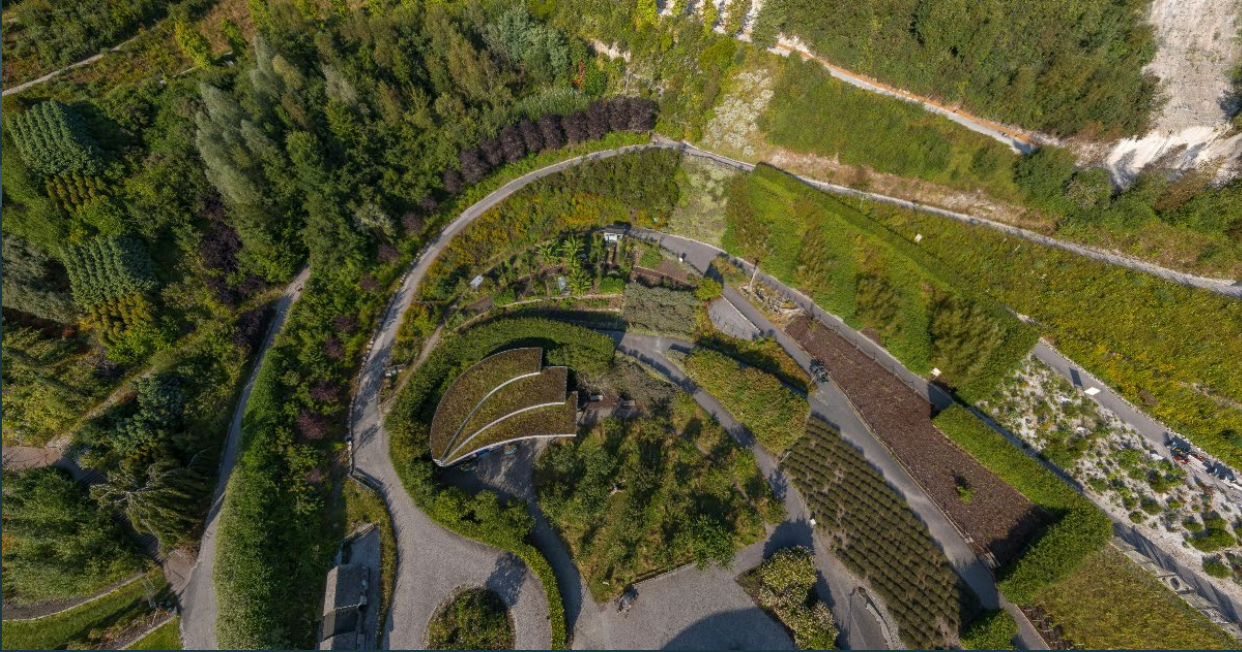


Mediterranean Biome



Outdoor Gardens

eden project



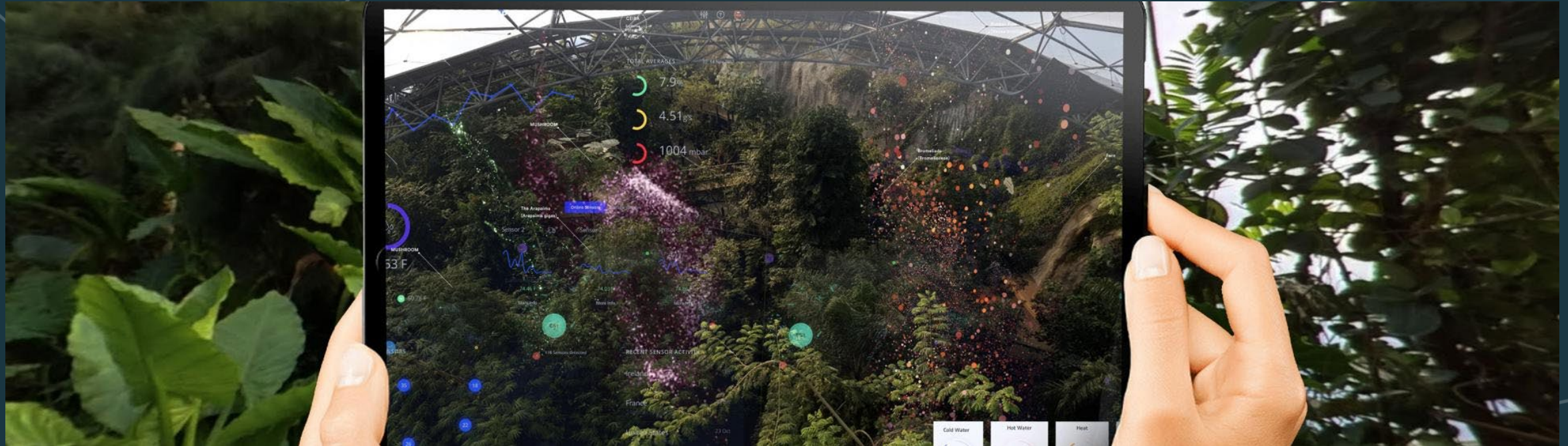
In the beginning...



What would you rather have written on your tombstone – I'm glad I did, or I wish I had?
Sir Tim Smit







Eden Project Weathermaker



Infinity Blue by Studio Swine Core Building, Eden Project

Photography Petr Krejci



Dramatic



Unexpected



Immersive & adventurous



Playful




Participatory



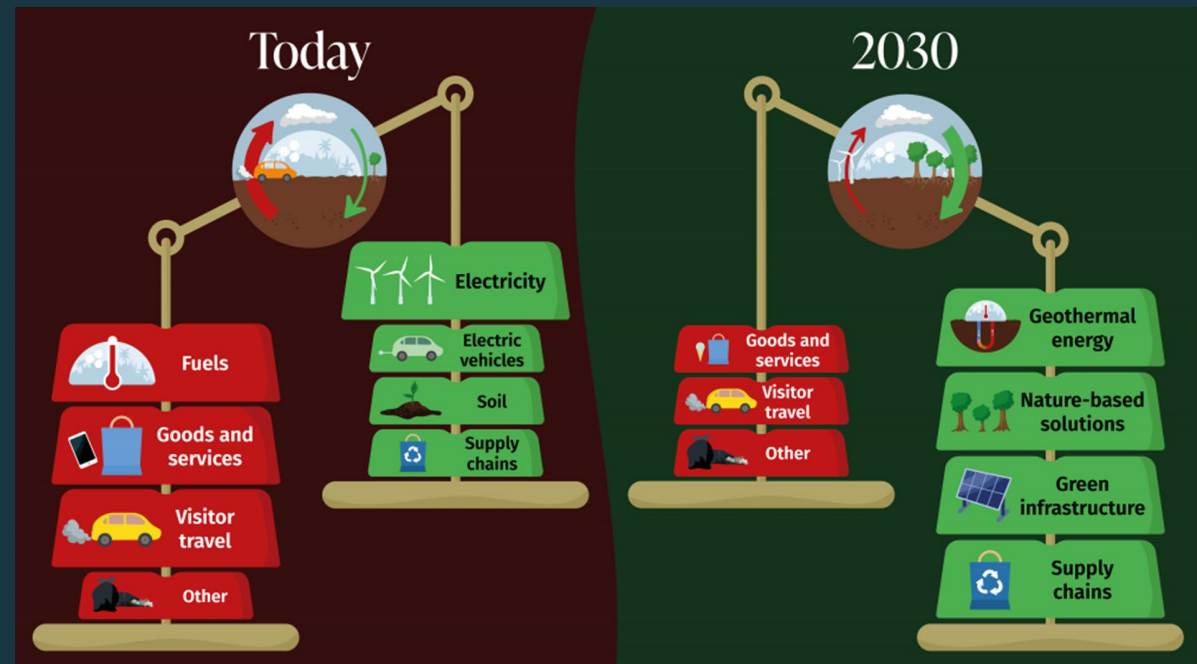
Interactive





When young people fear climate change and biodiversity loss, research shows, what matters most is social trust.

Chawla, L. (2020) Childhood nature connection and constructive hope: A review of research on connecting with nature and coping with environmental loss



Organise your Organisation

What does your organisation buy?

What food do you buy and where does it come from?

Eden Project Food Strategy

The food we serve supports a healthy planet and healthy people and meets as many of the following criteria as possible:

- Seasonal
- Local
- Organic
- Wholefood
- Supports livelihoods and social justice
- Respectful of culture and belief systems
- Includes regionally and seasonally distinctive dishes
- Minimises waste
- Accessible (choice and price)
- Commercially viable
- Robust certification schemes
- Low carbon footprint
- Avoid air freight

Organise your Organisation

What does your organisation buy?

What food do you buy and where does it come from?

What waste do you produce? Where does it go? How much does it cost?

Where does your energy come from? How do you use it?

How could you reduce it?

How do you look after nature and biodiversity on your campus?

What's the subtext?

